

SURVEYOR'S OFFICE

Hamilton County

Kenton C. Ward, Surveyor

Phone (317) 776-8495

Fax (317) 776-9628

Suite 188

One Hamilton County Square

Noblesville, Indiana 46060-2230

September 12, 2005

To: Hamilton County Drainage Board

Re: Centennial Drain – Centennial Commercial Phase 1 Arm

Attached is a petition filed by Estridge Development Co., Inc. along with a non-enforcement request, plans, and calculations for the Centennial Commercial Phase 1 Arm, Centennial Drain to be located in Washington Township. I have reviewed the submittals and petition and have found each to be in proper form.

I have made a personal inspection of the land described in the petition. Upon doing so, I believe that the drain is practicable, will improve the public health, benefit a public highway, and be of public utility and that the costs, damages and expenses of the proposed drain will probably be less than the benefits accruing to the owners of land likely to be benefited. The drain will consist of the following:

12" RCP 148 ft.

The total length of the drain will be 148 feet.

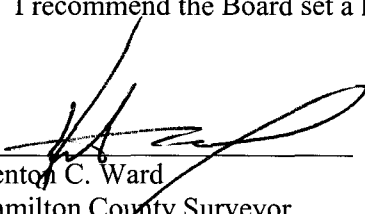
The petitioner has submitted surety for the proposed drain at this time. The sureties which are in the form of a Performance Bond are as follows:

Agent: Developers Surety and Indemnity Co.	Agent: Developers Surety and Indemnity Co.
Date: May 5, 2005	Date: May 5, 2005
Number: 716588S	Number: 716589S
For: Erosion Control	For: Storm Sewers
Amount: \$2,358.40	Amount: \$6,531.80

Parcels assessed for this drain may be assessed for the Osborn-Collins or Williams Creek Drain at sometime in the future. I believe this proposed drain meets the requirements for Urban Drain Classification as set out in IC 36-9-27-67 to 69. Therefore, this drain shall be designated as an Urban Drain.

I recommend that upon approval of the above proposed drain that the Board also approve the attached non-enforcement request. The request is for the reduction of the regulated drain easement to those easement widths as shown on the secondary plat for Centennial Commercial Phase 1 as recorded in the office of the Hamilton County Recorder.

I recommend the Board set a hearing for this proposed drain for January 23, 2006.



Kenton C. Ward
Hamilton County Surveyor

KCW/grh

STATE OF INDIANA)
)
COUNTY OF HAMILTON)

TO: HAMILTON COUNTY DRAINAGE BOARD
% Hamilton County Surveyor
One Hamilton County Square, Suite 188
Noblesville, IN. 46060-2230

In the matter of Centennial Commercial Subdivision, Section
Phase 1 Drain Petition.

Petitioner is the owner of all lots in the land affected by the proposed new regulated drain. The drainage will affect various lots in Centennial Commercial, a subdivision in Hamilton County, Indiana. The general route of such drainage shall be in existing easements and along public roads as shown in the plans on file in the Surveyor's Office.

Petitioner believes that the cost, damages and expenses of the proposed improvement will be less than the benefits which will result to the owners of the land likely to be benefited thereby. Petitioner believes the proposed improvements will:

- (a) improve public health
- (b) benefit a public street
- (c) be of public utility

Petitioner agrees to pay the cost of construction of the drainage system and requests periodic maintenance assessments by the Board thereafter.

The Petitioner also agrees to the following:

1. To provide the Drainage Board a Performance Bond or Non-Revocable Letter of Credit for the portion of the drainage system which will be made a regulated drain. The bond will be in the amount of 120% of the Engineer's estimate. The bond will be in effect until construction of 100% of the system is completed and so certified by the Engineer.
2. The Petitioner shall retain an Engineer throughout the construction phase. At completion of the project the Petitioner's Engineer shall certify that the drainage system which is to be maintained as a regulated drain has been constructed as per construction plans.
3. The Petitioner agrees to request in writing to the County Surveyor any changes from the approved plan and must receive written authorization from the County Surveyor prior to implementation of the change. All changes shall be documented and given to the Surveyor to be placed in the Drain file.
4. The Petitioner shall instruct his Engineer to provide a reproducible print on a 24" x 36" Mylar of the final design of the Drainage System. This shall be submitted to the County Surveyor prior to the release of the Performance Bond.
5. The Petitioner shall comply with the Erosion Control Plan as specified on the construction plans. Failure to comply with the Erosion Control Plan shall be determined by the Board as being an obstruction to the drainage system. The County Surveyor shall immediately install or repair the needed measures at Petitioners cost as per IC 36-9-27-46.

BEFORE THE HAMILTON COUNTY DRAINAGE BOARD
IN THE MATTER OF
Centennial Drain, Centennial Commercial Phase I Arm

NOTICE

To Whom It May Concern and: _____

Notice is hereby given of the hearing of the Hamilton County Drainage Board on the **Centennial Drain, Centennial Commercial Phase I Arm** on **January 23, 2006** at **10:00 A.M.** in Commissioners Court, Hamilton County Judicial Center, One Hamilton County Square, Noblesville, Indiana, and which construction and maintenance reports of the Surveyor and the Schedule of Assessments made by the Drainage Board have been filed and are available for public inspection in the office of the Hamilton County Surveyor.

Hamilton County Drainage Board

Attest: Lynette Mosbaugh

ONE TIME ONLY

BEFORE THE HAMILTON COUNTY DRAINAGE BOARD
IN THE MATTER OF THE

Centennial Drain, Centennial Commercial Phase I

NOTICE

Notice is hereby given pursuant to Section 405 of the 1965 Indiana Drainage Code that this Board, prior to final adjournment on **January 23, 2006** has issued an order adopting the Schedule of Assessments, filed the same and made public announcement thereof at the hearing and ordered publication. If judicial review of the findings and order of the Board is not requested pursuant to Article Eight of this code within twenty (20) days from the date of this publication, the order shall be conclusive.

Hamilton County Drainage Board

Attest: Lynette Mosbaugh

ONE TIME ONLY

FINDINGS AND ORDER

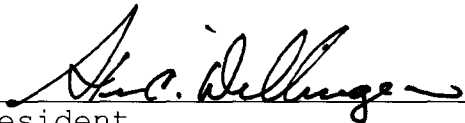
CONCERNING THE MAINTENANCE OF THE

Centennial Drain, Centennial Commercial Phase 1 Arm

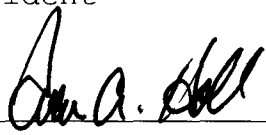
On this **23rd day of January 2006**, the Hamilton County Drainage Board has held a hearing on the Maintenance Report and Schedule of Assessments of the **Centennial Drain, Centennial Commercial Phase 1 Arm**.

Evidence has been heard. Objections were presented and considered. The Board then adopted the original/amended Schedule of Assessments. The Board now finds that the annual maintenance assessment will be less than the benefits to the landowners and issues this order declaring that this Maintenance Fund be established.

HAMILTON COUNTY DRAINAGE BOARD




President



Member



Member

Attest: 

CERTIFICATE OF COMPLETION AND COMPLIANCE

TO: HAMILTON COUNTY SURVEYOR
RE: Centennial Commercial, Phase 1

I hereby certify that:

1. I am a Register Engineer in the State of Indiana
2. I am familiar with the plans and specifications for the above referenced subdivision.
3. I have personally observed and supervised the completion of the Drainage Facilities for the above referenced subdivision, and
4. To the best of my knowledge, information and belief, the Drainage Facilities within the subdivision has been installed and completed in conformity with all plans and specifications.

Signature:  Date: 10/19/05

Type or print name: J. Cort Crosby P.E.

Business /Address: The Schneider Corporation

8901 OTIS AVENUE, INDIANAPOLIS, IN 46216

Telephone: (317) 826-7306

SEAL



INDIANA REGISTRATION NUMBER

PE 920350



Kenton C. Ward, CFM
Surveyor of Hamilton County

Phone (317) 776-8495

Fax (317) 776-9628

Suite 188

One Hamilton County Square
Noblesville, Indiana 46060-2230

To: Hamilton County Drainage Board

August 24, 2009

Re: Williams Creek: Centennial Commercial Phase 1

Attached are as-builts, certificate of completion & compliance, and other information for Centennial Commercial Phase 1. An inspection of the drainage facilities for this section has been made and the facilities were found to be complete and acceptable.

During construction, changes were made to the drain, which will alter the plans submitted with my report for this drain-dated September 12, 2005. The report was approved by the Board at the hearing held January 23, 2006. (See Drainage Board Minutes Book 9, Pages 38-39)
The changes are as follows:

The 12" RCP was lengthened from 148 feet to 190 feet.

The length of the drain due to the changes described above is now **190 feet**. There was 42' of 12" RCP removed from the Centennial Townhomes Sec. 2 arm. Therefore, this project added 148 feet of drain to the watershed.

The non-enforcement was approved by the Board at its meeting on January 23, 2006 and recorded under instrument #2006000191418.

The following sureties were guaranteed by Developers Surety And Indemnity Co. and released by the Board on its August 24, 2009 meeting.

Bond-LC No: 716588S

Insured For: Storm Sewers

Amount: \$2,358.40

Issue Date: May 5, 2005

Bond-LC No: 716588S

Insured For: Erosion Control

Amount: \$6,531.80

Issue Date: May 5, 2005

I recommend the Board approve the drain's construction as complete and acceptable.

Sincerely,

A handwritten signature in black ink, appearing to read 'K. Ward', written over a horizontal line.

Kenton C. Ward, CFM
Hamilton County Surveyor

KCW/slm

UTILITIES - WESTFIELD

GAS
Verton
1600 Allisonville Road
Noblesville, Indiana 46060
Attn: Jim Scott

STORM SEWERS
Hamilton Co. Surveyor
One Hamilton Co. Square
Suite 188
Noblesville, Indiana 46060
(317) 776-8495

STREETS
Hamilton Co. Highway Dept.
1700 S. 10TH Street
Noblesville, Indiana 46060
Attn: Mike McBride

Phone, Cable TV, Internet, E.COM
750 Liberty Drive
Westfield, Indiana 46074

SANITARY SEWERS AND WATER TOWN OF WESTFIELD
2706 E. 171ST Street
Westfield, Indiana 46074
Attn: Andy Kern

ELECTRIC
CINERGY
100 Mill Creek Road
Noblesville, Indiana 46060
Attn: Brad Blackman

Utility Hotline: within Indiana 1-800-382-5544
outside Indiana 1-800-428-5200

NOTE
The size and location of utilities are per plans and locations provided by the respective utility companies. All utility companies shall be notified prior to any excavation for field location of services.

LEGEND

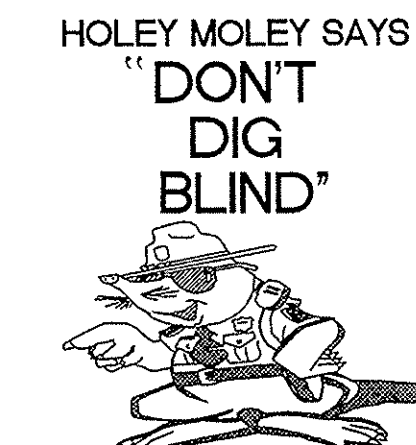
- Existing Storm Sewer
- New Storm Sewer
- Existing Sanitary Sewer
- New Sanitary Sewer
- Subsurface Drain
- Existing Contour
- 000.00 Existing Elevation
- 000.00 New Pavement Elevations
- 000.00 All Other Finish Elevations
- ⊙ Storm Structure Number
- ⊙ Sanitary Structure Number
- M.E. Meet Existing Elevation
- Stop Sign
- etc Electric, Telephone, Cable TV

⊙ SANITARY SEWER TABLE

STR #	STA	BASELINE	OFFSET	LT/RT	TYPE	TC	INVERTS
E42	-----	-----	-----	-----	EXISTING MANHOLE	908.34	EX-908.34 (N)
42A	3+38.79	"A"	127.16'	RT	MANHOLE	908.34	EX-908.34 (N)

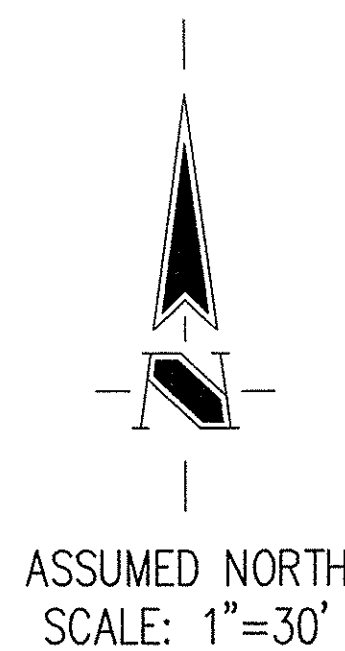
STR #	STA	BASELINE	OFFSET	LT/RT	TYPE	TC	INVERTS
E406	-----	-----	-----	-----	EXISTING PAVED AREA INLET	909.63	EX-905.03 (SE), EX-904.93 (E), EX-904.93 (N)
407	-----	-----	-----	-----	PAVED AREA INLET	909.44	906.20 (SW) 905.69 (NW)
408	-----	-----	-----	-----	PAVED AREA INLET	909.10	906.80 (NE)

**NOT APPLICABLE
SEE PROFILE SHEETS**



"IT'S THE LAW"
CALL 2 WORKING DAYS BEFORE YOU DIG
1-800-382-5544

CALL TOLL FREE
PER INDIANA STATE LAW 5-69-1991,
IT IS AGAINST THE LAW TO EXCAVATE
WITHOUT NOTIFYING THE UNDERGROUND
LOCATION SERVICE TWO (2) WORKING
DAYS BEFORE COMMENCING WORK.



BENCHMARK

BM - U.S.G.S. 93 RHP (1951)
GRASS DISK IN CONCRETE POST S.W. CORNER OF 146TH AND
DITCH ROAD.
ELEV. = 903.373

TBM #9
R.R. SPIKE 1.3' UP NORTH SIDE OF MAPLE S.E. CORNER SITE.
ELEV. = 908.39

COURT CROSSY
REGISTERED
No. 920350
STATE OF INDIANA
PROFESSIONAL ENGINEER

[Signature]
DATE: 10/18/05

THIS DRAWING AND THE IDEAS, DESIGNS AND CONCEPTS CONTAINED HEREIN ARE THE EXCLUSIVE INTELLECTUAL PROPERTY OF THE SCHNEIDER CORPORATION AND ARE NOT TO BE USED OR REPRODUCED, IN WHOLE OR IN PART, WITHOUT THE WRITTEN CONSENT OF THE SCHNEIDER CORPORATION.

© COPYRIGHTED BY THE SCHNEIDER CORP. (2005)

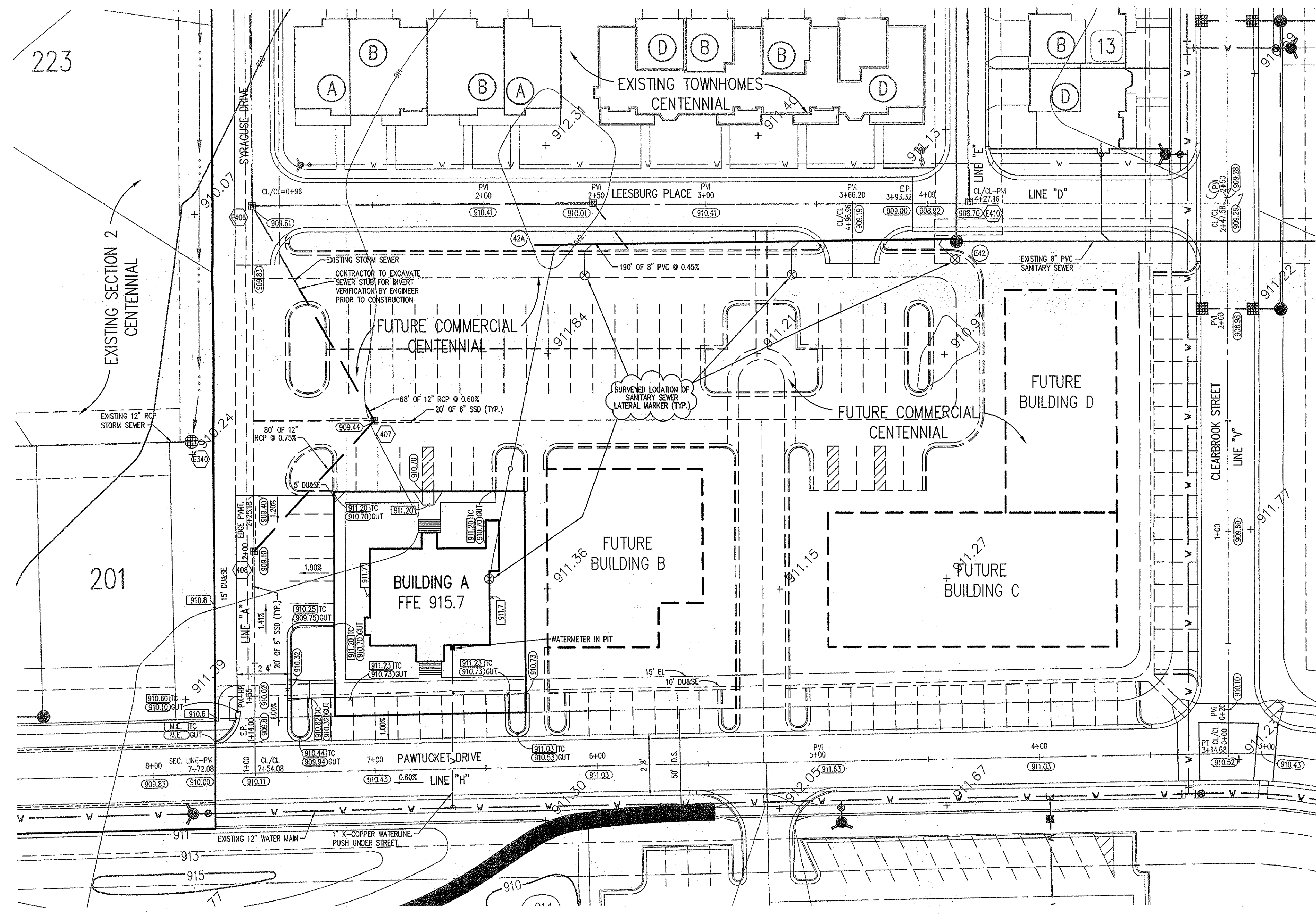
Schneider

THE SCHNEIDER CORPORATION
Historic Fort Harrison
8901 Otis Avenue
Indianapolis, IN 46216-1037
Telephone: 317.826.7100
Fax: 317.826.7200
www.schneidercorp.com

Architecture
Civil Engineering
Environmental Engineering
Geotechnical Services
GIS + LIS
Home Builder Services
Interior Design
Land Surveying
Landscape Architecture
Transportation Engineering

GENERAL NOTES

- ALL GRADES AT BOUNDARY SHALL MEET EXISTING GRADES.
- IT SHALL BE THE RESPONSIBILITY OF EACH SUBCONTRACTOR TO VERIFY ALL EXISTING UTILITIES AND CONDITIONS PERTAINING TO HIS PHASE OF WORK. IT SHALL ALSO BE THE SUBCONTRACTOR'S RESPONSIBILITY TO CONTACT THE OWNERS OF THE VARIOUS UTILITIES FOR PROPER STAKE LOCATION OF EACH UTILITY BEFORE WORK IS STARTED. THE SUBCONTRACTOR SHALL NOTIFY IN WRITING THE OWNER AND THE ENGINEER OF ANY CHANGES, OMISSIONS, OR ERRORS FOUND ON THESE PLANS OR IN FIELD BEFORE WORK IS STARTED OR RESUMED.
- STANDARD SPECIFICATIONS FOR THE HAMILTON WESTERN, UTILITIES SHALL APPLY FOR ALL SANITARY SEWERS.
- ANY PART OF THE SANITARY OR STORM SEWER TRENCHES RUNNING UNDER PAVED AREAS TO BE BACKFILLED WITH GRANULAR MATERIAL.
- THE SIZE AND LOCATION OF EXISTING UTILITIES SHOWN ARE PER INFORMATION PROVIDED BY THE RESPECTIVE UTILITY COMPANIES. ALL UTILITY COMPANIES SHOULD BE NOTIFIED PRIOR TO ANY EXCAVATION FOR FIELD LOCATION OF SERVICES.
- SERVICE WALKS SHALL BE NON-REINFORCED CONCRETE 4" THICK AND 4' IN WIDTH.
- 4" CONCRETE SERVICE WALK ACROSS FRONTAGE OF EACH LOT TO BE CONSTRUCTED BY OTHERS.
- EXPANSION JOINTS ARE TO BE PLACED AT ALL WALK INTERSECTION AND BETWEEN WALKS AND PLATFORMS. SIDEWALK SCORES ARE TO BE EQUALLY SPACED BETWEEN EXPANSION JOINTS. CONTRACTION JOINTS AND PERPENDICULAR SIDEWALKS AT 5' INTERVALS OR LESS WITH A CONTRACTION JOINT EVERY 20' OR LESS.
- TEMPORARY TRAFFIC CONTROL DURING CONSTRUCTION TO CONFORM TO APPLICABLE LOCAL AND STATE STANDARDS.
- ALL CONSTRUCTION ACTIVITY ON THIS SITE TO BE PERFORMED IN COMPLIANCE WITH APPLICABLE O.S.H.A. STANDARDS FOR WORKER SAFETY.
- CONTRACTOR SHALL MINIMIZE DAMAGE TO EXISTING TREES.
- ALL REAR YARD SUBSURFACE DRAINS ARE TO BE 6" MINIMUM, EXCEPT FOR INDIVIDUAL LOT CONNECTIONS WHICH ARE TO BE 4" MINIMUM.

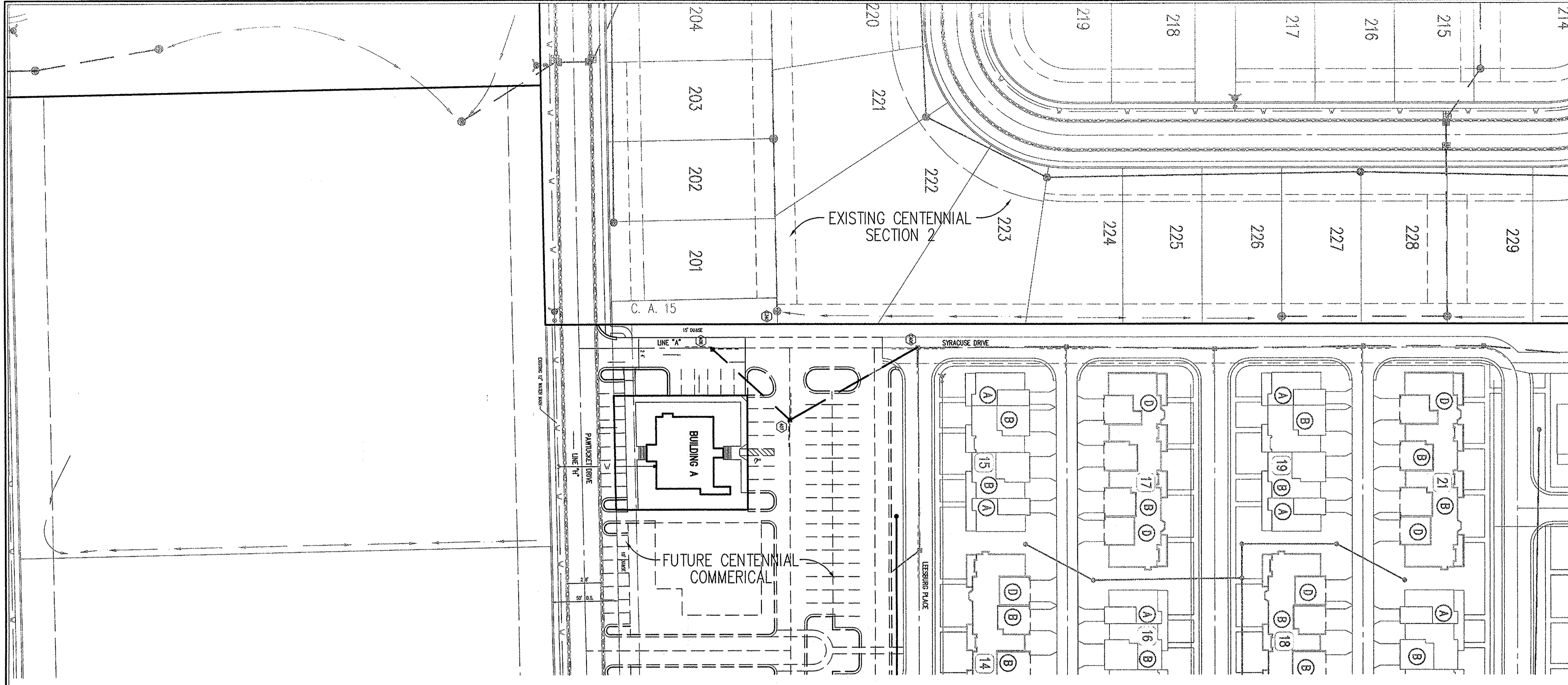


RECORD DRAWING

CENTENNIAL COMMERCIAL
PHASE 1
WESTFIELD, INDIANA
ESTRIDGE DEVELOPMENT CO., INC.
CARMEL, INDIANA

DATE: 04/12/05	PROJECT NO.: 753.007
DRAWN BY: PRC	CHECKED BY: JCC
SHEET TITLE: DEVELOPMENT PLAN	
DRAWING FILES: R:\753\007\DWGS\C102 XREF: 00785 XREF: 00785-2 XREF: R:\753\010\DWGS\010B5 XREF: R:\753\002\DWGS\002B5 XREF: R:\753\006\DWGS\C-CHURCH XREF: R:\753\001\DWGS\001B5 XREF: R:\753\001\DWGS\753TOP0	
SHEET NO.:	

C102



HOLEY MOLEY SAYS
"DON'T DIG BLIND"

"IT'S THE LAW"
 CALL 2 WORKING DAYS BEFORE YOU DIG
1-800-382-5544
 CALL TOLL FREE
 PER INDIANA STATE LAW 15-69-1991,
 IT IS AGAINST THE LAW TO EXCAVATE
 WITHOUT NOTIFYING THE UNDERGROUND
 LOCATION SERVICE TWO (2) WORKING
 DAYS BEFORE COMMENCING WORK.

- GENERAL NOTES**
- TEMPORARY TRAFFIC CONTROL DURING CONSTRUCTION TO CONFORM TO APPLICABLE LOCAL AND STATE STANDARDS.
 - ALL CONSTRUCTION ACTIVITY ON THIS SITE TO BE PERFORMED IN COMPLIANCE WITH APPLICABLE O.S.H.A. STANDARDS FOR WORKER SAFETY.
 - IT SHALL BE THE CONTRACTORS RESPONSIBILITY TO FIELD VERIFY ALL UTILITY LOCATIONS BEFORE CONSTRUCTION BEGINS.
 - CONTRACTORS SHALL MINIMIZE DAMAGE TO EXISTING TREES.

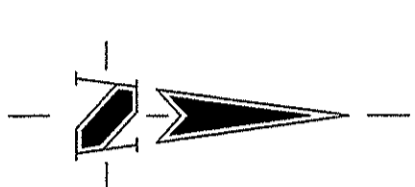
CERTIFICATION FOR "RECORD DRAWING"

NOTE:
 Record drawing certification for top of casing, invert elevations, and lengths of pipe only. Slope percentage represents a calculated figure and is for general information only.

BENCHMARK

BM - U.S.G.S. 93 RHP (1951)
 BRASS DISK IN CONCRETE POST S.W. CORNER OF 146TH AND DITCH ROAD.
 ELEV. = 903.373

TBM #9
 R.R. SPIKE 1.3' UP NORTH SIDE OF MAPLE± S.E. CORNER SITE.
 ELEV. = 908.39

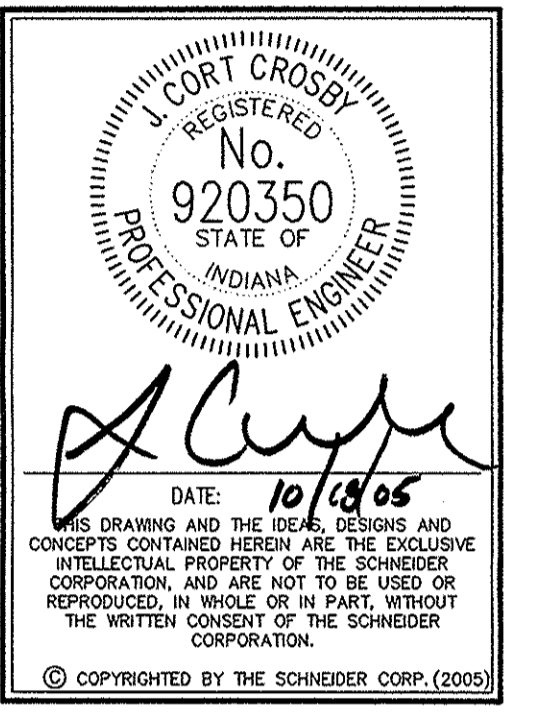


Sheet	Sheet Number	Description
CB01	2	Bedding Detail - Reinforced Concrete Pipe (RCP)
CB01	1	Paved Area Inlet Detail

LEGEND/DETAILS

NOTE

REVISIONS

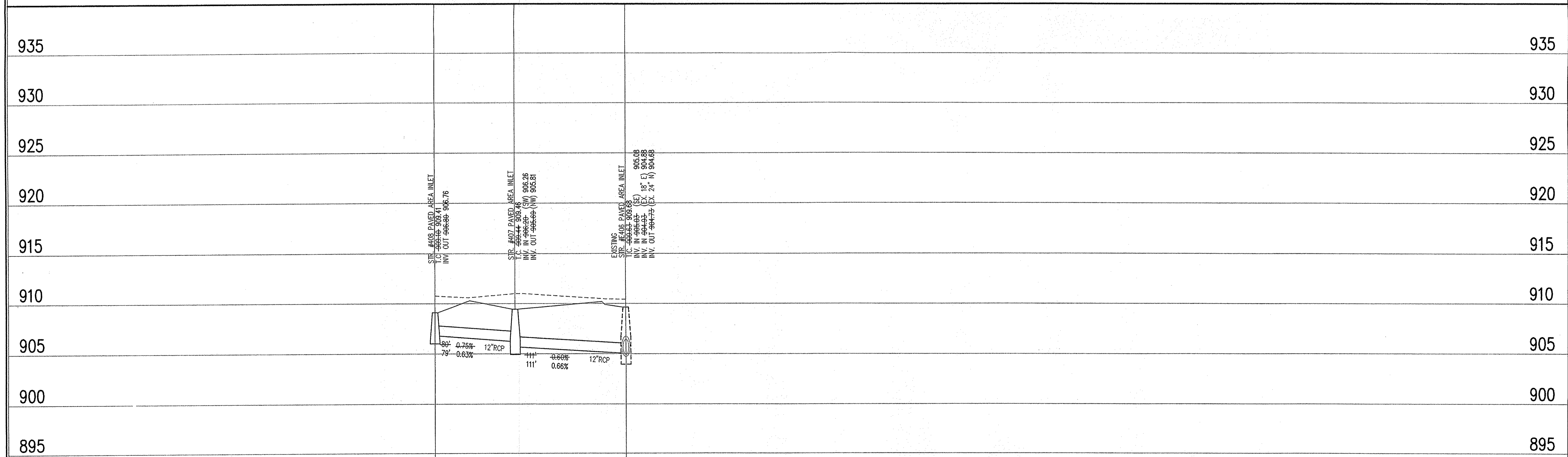


THE SCHNEIDER CORPORATION
 Historic Fort Harrison
 8901 Otis Avenue
 Indianapolis, IN 46216-1037
 Telephone: 317.826.7100
 Fax: 317.826.7300
 www.schneidercorp.com

Architecture
 Civil Engineering
 Environmental Engineering
 Geotechnical Services
 GIS * LIS
 Home Builder Services
 Interior Design
 Land Surveying
 Landscape Architecture
 Transportation Engineering

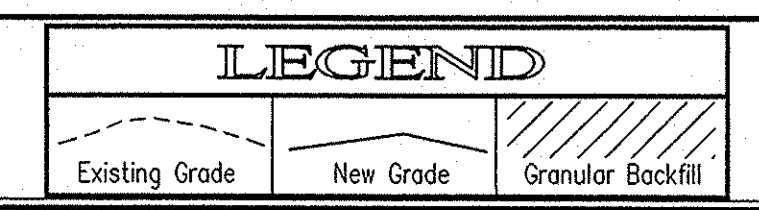
STORM SEWER PLAN

SCALE: 1"=50'



STORM SEWER RECORD DRAWING

STORM SEWER PROFILE



SCALE: HORZ.: 1"=50'
 VERT.: 1"=5'

CENTENNIAL COMMERCIAL
PHASE 1
 WESTFIELD, INDIANA
ESTRIDGE DEVELOPMENT CO., INC.
 CARMEL, INDIANA

DATE: 04/12/05 PROJECT NO.: 753.007
 DRAWN BY: DRP CHECKED BY: JCC
 SHEET TITLE: STORM SEWER PLAN

DRAWING FILES:
 R:\753\007\DWG\C601
 XREF: R:\753\007\DWG\STORM
 XREF: R:\753\001\DWG\001B5
 XREF: R:\753\002\DWG\002B5
 XREF: R:\753\001\DWG\001B5
 XREF: R:\753\007\DWG\007B5-2
 XREF: R:\753\010\DWG\010B5

SHEET NO.: **C601**